

# WELBEE

P452, P502L



MIG/MAG



ELECTRODE  
WELDING



lift TIG



SERVICE AND SUPPORT

RELIABLE  
QUICK

★★★★★  
GUARANTEED  
QUALITY

GUARANTEE

3

YEARS  
to the welding  
source

STEP INTO THE PROFESSIONAL WORLD OF WELDING



## USER FRIENDLY

### » EXCELLENT VISIBILITY OF PARAMETERS ON THE FRONT PANEL

Even in poor visibility conditions

### » MULTILINGUAL MENU

Slovenian, Croatian, Serbian, Hungarian, English, and German

### » EASY ERROR HANDLING

The system automatically identifies errors and offers solutions, avoiding time-consuming troubleshooting or the need to call a service technician

## SOLUTIONS FOR EASIER WELDING

### CONSTANT PENETRATION

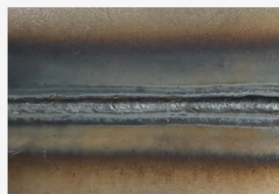
Take advantage of the benefits of consistent weld penetration.

### IMPROVED ARC START

Avoid time-consuming wire cutting when welding stainless steel. Arxis devices automatically prepare the wire for the next weld.

### LOW SPATTER FUNCTION (P403L IN P503L)

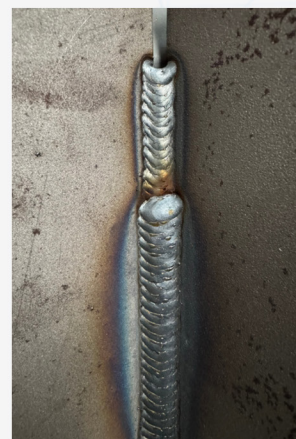
Root weld, welding of thin sheets, welding in constrained positions.



ROOT WELD



WELDING OF THIN SHEETS



WELDING IN CONSTRAINED POSITIONS

Welding process	WELBEE P452	WELBEE P502L
DC pulse	Steel, Stainless steel, Aluminum, MIG brazing, Inconel, Titanium	
DC wave pulse	Steel, Stainless steel, Aluminum, MIG brazing, Inconel, Titanium	
Low spatter	/	Steel, Stainless steel
DC	Steel, Stainless steel, Aluminum, MIG brazing, Flux-cored wire (Fe, CrNi)	
MMA	•	•
DC liftTIG	•	•



## SIMPLE TRANSFER AND SETUP OF WELDING PARAMETERS

- » **FAST AND EASY COPYING OF**  
Welding parameters via USB connection
- » **GUIDE FOR EASY WELDING PARAMETER SET UP**



- » **PARAMETER LOCKING FUNCTION – ENSURING CONSISTENCY**

## 99 ADVANCED FUNCTIONS

### FOR MORE DEMANDING WELDING APPLICATIONS

- » **PULSE WELDING CURRENT STABILIZATION FUNCTION**  
For long intermediate cables
- » **FUNCTION FOR CUSTOM CRATER FORMATION**  
2T, 4T DC, 4T DC Pulse
- » **FINE ADJUSTMENT OF PULSE CURRENT**
- » **WELDING CURRENT CHANGE**  
Increase and decrease the welding current to any pre-set ampere value with a single or double click of the welding torch
- » **ARC TIME OVERVIEW**
- » **CALIBRATION OF WELDING CURRENT**

AND MUCH MORE...

Specifications / Model	Welbee Inverter P452	Welbee Inverter P502L
Rated input voltage	3x400 V	3x400 V
Input Power	23.3 kVA, 19.9kW	25.4 kVA, 23.1 kW
Welding current range	33.6 A	36.6 A
Open Circuit Voltage	80 V	70 V
Standby Power Consumption	44 W	86 W
Duty Cycle (ED / 40 °C)	60%	400 A
	100%	370 A
IP class	IP 23	IP 23
Efficiency	85.2%	85.2%
Number of JOBS	100	100
External Dimensions (WxDxH)	395×710×592 mm	395×710×762 mm
Weight	62 kg	83 kg

# ARXIS x WeldUniverse

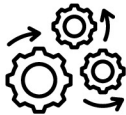
CUSTOM MADE FOR PRODUCTION AND MANAGEMENT

WeldUniverse, through the analysis of statistical data and graphical representations, provides a real-time overview of production. This facilitates planning, organization, management, and control of production and its processes.



## Connectivity

Integration with MES and ERP systems and access via smart devices.



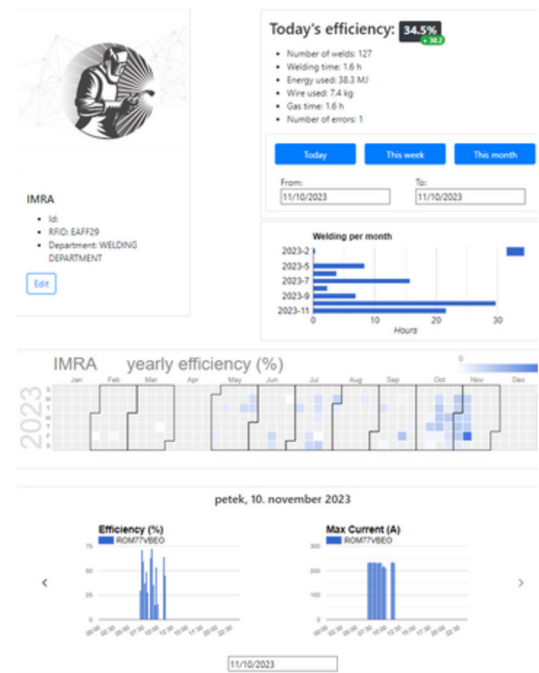
## Unburdening of processes

Facilitating work of quality department (QS), welding control, production planning, etc.



## Notification of errors

The error notification system enables quick and targeted troubleshooting.



» COMPANY MANAGEMENT

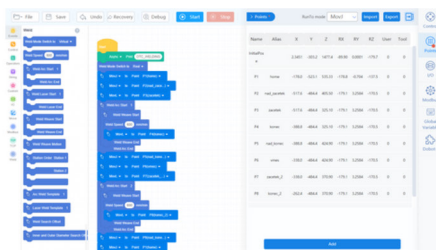
» MANAGEMENT OF WELDERS

» PRODUCT MANAGEMENT

» DEVICE MANAGEMENT

# ARXIS x CO-BOT

EASY WAYS TO PROGRAM AND CONTROL



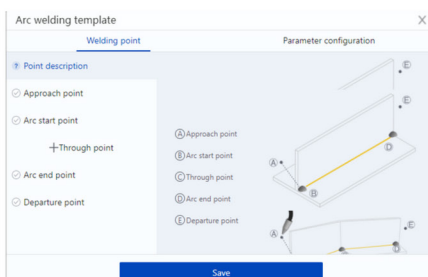
BLOCKY PROGRAMMING LANGUAGE



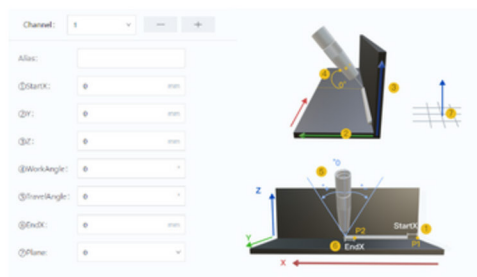
LUA PROGRAMMING LANGUAGE



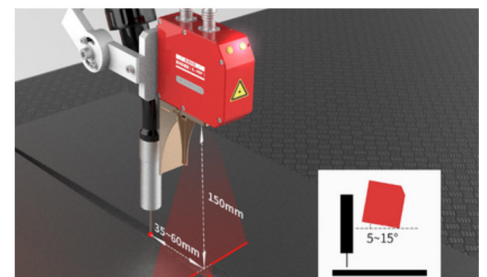
DRAG MODE



WELDING BY ARC TEMPLATE



MULTIPASS WELDING



LASER POSITIONING AND TRACKING